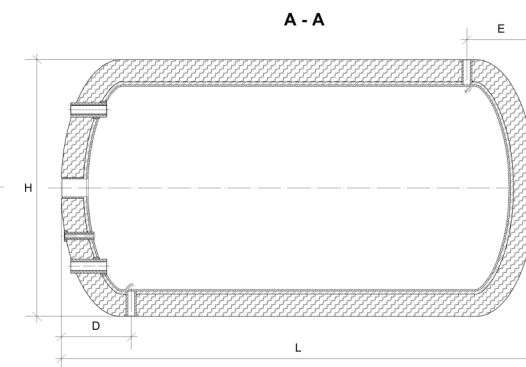
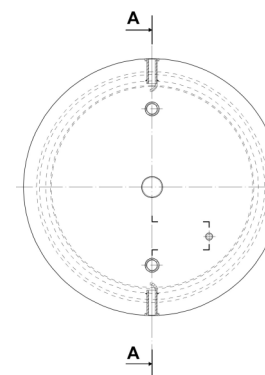


LEGEND

- 1 INPUT/OUTPUT TO COAL-FIRED KITCHEN PIPE
- 2 ELECTRIC HEATER WITH THERMOSTAT 5/4"
- 3 CIRCULATION 1/2"
- 4 DOMESTIC WATER SUPPLY 3/4"
- 5 DOMESTIC WATER INTAKE 3/4"
- 6 POLYURETHANE FOAM THERMAL INSULATION
- 7 ANTI-CORROSION LAYER



TECHNICAL PARAMETERS	Symbol								
		ZCWPOzEPGKWPOD80	ZCWPOzEPGKWPOD100	ZCWPOzEPGKWPOD120	ZCWPOzEPGKWPOD140	ZCWPOzEPGKWPOD200	ZCWPOzEPGKWPOD250	ZCWPOzEPGKWPOD300	
Nominal capacity	[L]	80	100	120	140	200	250	300	
Real capacity	[L]	98	112	127	141	241	299	355	
Weight	[kg]	33	37	41	45	67	77	88	
Water tank maximum working temperature and pressure	[°C/Bar]	70°C / 6Bar							
Downtime loss (S) in watt [W] for storage capacity in liters [L]	[W]	25	26	27	28	34	36	39	
Heat losses depending on the capacity (V)	[kWh/24h]	0,61	0,63	0,66	0,68	0,81	0,87	0,93	
DIAMENSIONS									
DIAMETER [H]	[mm]	470	470	470	470	630	630	630	
LENGHT [L]	[mm]	800	960	1112	1200	1200	1500	1700	
DIAMENSION [D]	[mm]	280	270	290	280	220	230	240	
DIAMENSION [E]	[mm]	280	250	260	280	310	310	300	

SYMBOL: ZCWPOzEPGKWPOD



A+

80 | 100 | 120 | 140

A

200 | 250 | 300