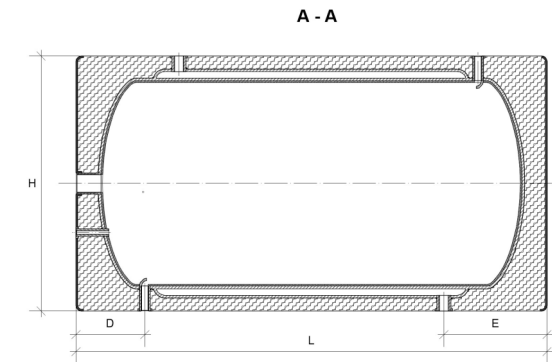
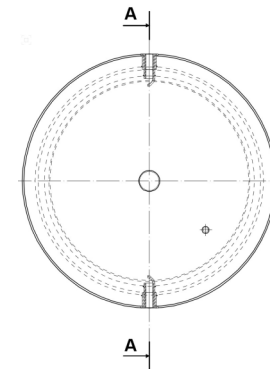


LEGEND

- 1 SUPPLY (CENTRAL HEATING) 1"
- 2 ELECTRIC HEATER WITH THERMOSTAT 5/4"
- 3 WATER CIRCULATION
- 4 ANTI-CORROSION LAYER
- 5 COAT (CENTRAL HEATING)
- 6 DOMESTIC WATER INTAKE 3/4"
- 7 DOMESTIC WATER SUPPLY 3/4"
- 8 POLYURETHANE FOAM
THERMAL INSULATION
- 9 WATER RETURN (CENTRAL HEATING) 1"



| TECHNICAL PARAMETERS | Symbol | | | | | | | |
|--|---------------------|--------------|---------------|---------------|---------------|---------------|---------------|---------------|
| | | DPWPozEPGC80 | DPWPozEPGC100 | DPWPozEPGC120 | DPWPozEPGC140 | DPWPozEPGC200 | DPWPozEPGC250 | DPWPozEPGC300 |
| Nominal capacity | [L] | 80 | 100 | 120 | 140 | 200 | 250 | 300 |
| Real capacity | [L] | 98 | 112 | 127 | 141 | 241 | 299 | 355 |
| Energy accumulated in the tank. Assumptions for the temperatures: domestic water 42°C; set in the tank 90°C; at the point of consumption 8°C | [L] | 179 | 205 | 232 | 258 | 439 | 546 | 647 |
| Efficiency | [L/h] | 325 | 355 | 485 | 620 | 990 | 1165 | 1295 |
| Power | [kW] | 19,0 | 19,5 | 24,0 | 31,0 | 37,0 | 44,0 | 51,0 |
| Hot water demand | [m ³ /h] | 1,4 | 1,4 | 1,6 | 1,6 | 2,1 | 2,4 | 2,7 |
| Heating surface | [m ²] | 0,73 | 0,74 | 1,08 | 1,32 | 1,60 | 2,1 | 2,7 |
| Weight | [kg] | 27 | 32 | 37 | 42 | 57 | 72 | 85 |
| Water tank maximum working temperature and pressure | [°C/Bar] | 70°C / 6Bar | | | | | | |
| Downtime loss (S) in watt [W] for storage capacity in liters [L] | [W] | 25 | 26 | 27 | 28 | 34 | 36 | 39 |
| Heat losses depending on the capacity (V) | [kWh/24h] | 0,61 | 0,63 | 0,66 | 0,68 | 0,81 | 0,87 | 0,93 |
| DIAMENSIONS | | | | | | | | |
| DIAMETER [H] | [mm] | 470 | 470 | 470 | 470 | 630 | 630 | 630 |
| LENGHT [L] | [mm] | 800 | 960 | 1112 | 1200 | 1200 | 1500 | 1700 |
| DIAMENSION [D] | [mm] | 210 | 210 | 210 | 210 | 180 | 180 | 240 |
| DIAMENSION [E] | [mm] | 210 | 210 | 210 | 210 | 240 | 260 | 320 |

SYMBOL: DPWPozEPGC



A+

80 | 100 | 120 | 140

A

200 | 250 | 300