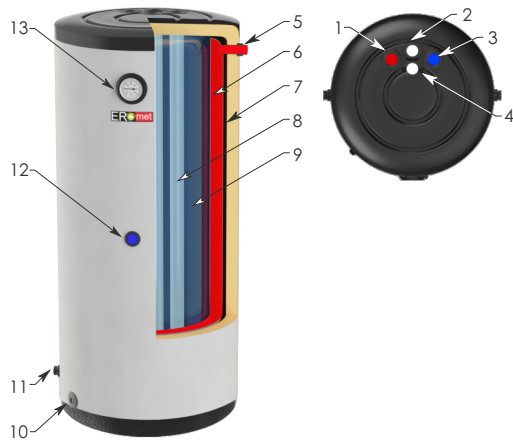
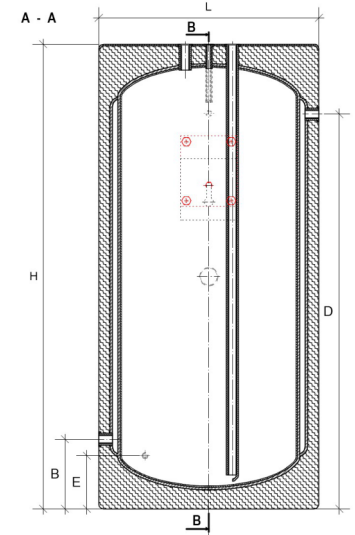
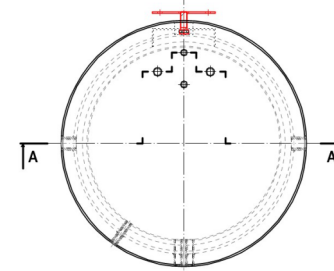


# VERTICAL DOUBLE SHELL HANGING WATER EXCHANGER



## LEGEND

- 1 DOMESTIC WATER INTAKE 3/4"
- 2 WATER CIRCULATION 1/2"
- 3 DOMESTIC WATER SUPPLY 3/4"
- 4 CAPILLARY TUBE  
TEMPERATURE SENSOR 1/2"
- 5 SUPPLY CENTRAL HEATING 1"
- 6 DOUBLE SHELL (CENTRAL HEATING)
- 7 POLYURETHANE FOAM  
THERMAL INSULATION
- 8 DOMESTIC WATER SUPPLY 3/4"
- 9 ANTI CORROSION LAYER
- 10 DRAIN 3/4"
- 11 WATER RETURN (CENTRAL HEATING) 1"
- 12 ELECTRIC HEATER WITH THERMOSTAT 5/4"
- 13 THERMOMETER 1/2"



## TECHNICAL PARAMETERS

TECHNICAL PARAMETERS	Symbol	DPWPionWiszePGC80	DPWPionWiszePGC100	DPWPionWiszePGC120	DPWPionWiszePGC140
Nominal capacity	[L]	80	100	120	140
Real capacity	[L]	98	112	127	141
Energy acumulated in the tank. Assumptions for the temperatures: domestic water 42°C; set in the tank 90°C; at the point of consumption 8°C	[L]	179	205	232	258
Efficiency	[L/h]	325	355	500	660
Power	[kW]	19	19,5	24	31
Hot water demand	[m³/h]	1,4	1,4	1,6	1,6
Heating surface	[m²]	0,80	0,95	1,10	1,32
Weight	[kg]	38	42	46	50
Water tank maximum working temperature and pressure	[°C/Bar]	70°C / 6Bar			
Downtime loss (S) in watt [W] for storage capacity in liters [L]	[W]	25	26	27	28
Heat losses depending on the capacity (V)	[kWh/24h]	0,61	0,63	0,66	0,68
DIAMENSIONS					
DIAMETER [L]	[mm]	490	490	490	490
LENGHT [H]	[mm]	945	1060	1180	1295
DIAMENSION [B]	[mm]	240	230	250	240
DIAMENSION [D]	[mm]	690	800	920	1010
DIAMENSION [E]	[mm]	175	200	200	200

SYMBOL: DPWPionWiszePGC



**A+**

80 | 100 | 120 | 140