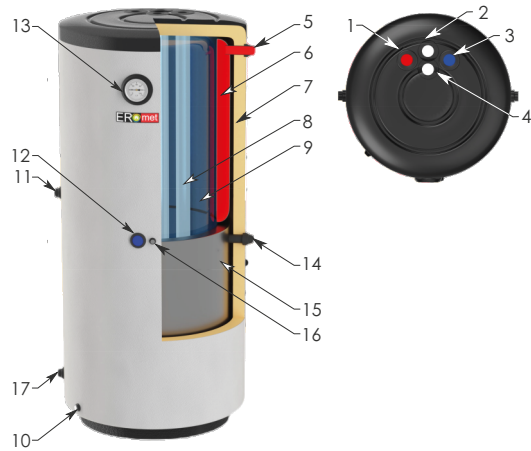
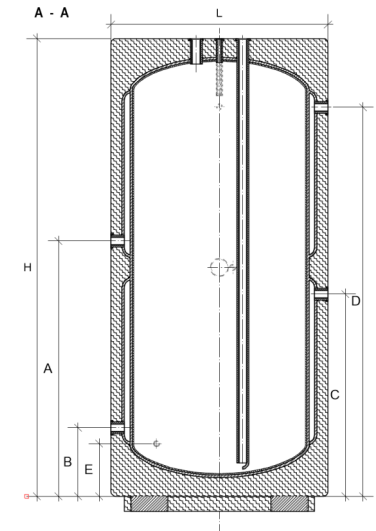
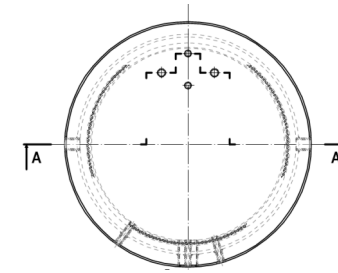


# VERTICAL DOUBLE SHELL WATER EXCHANGER FOR TWO SOURCES OF HEAT



## LEGEND

- 1 DOMESTIC WATER INTAKE 3/4"
- 2 WATER CIRCULATION 1/2"
- 3 DOMESTIC WATER SUPPLY 3/4"
- 4 CAPILLARY TUBE TEMPERATURE SENSOR 1/2"
- 5 SUPPLY (CENTRAL HEATING) 1"
- 6 DOUBLE SHELL (CENTRAL HEATING)
- 7 POLYURETHANE FOAM THERMAL INSULATION
- 8 DOMESTIC WATER SUPPLY 3/4"
- 9 ANTI CORROSION LAYER
- 10 DRAIN 3/4"
- 11 WATER RETURN (CENTRAL HEATING) 1"
- 12 ELECTRIC HEATER WITH THERMOSTAT 5/4"
- 13 THERMOMETER 1/2"
- 14 SOLAR POWER SUPPLY 1"
- 15 DOUBLE SHELL (SOLAR)
- 16 CAPILLARY TUBE FOR SOLAR TEMP. SENSOR 1/2"
- 17 SOLAR ENERGY RETURN 1"



| TECHNICAL PARAMETERS   | Symbol    | Model        |              |              |              |              |              |              |              |              |              |              |              |               |  |
|--|-----------|--------------|--------------|--------------|--------------|--------------|--------------|--------------|--------------|--------------|--------------|--------------|--------------|---------------|--|
|  |           | DPWPionCO100 | DPWPionCO120 | DPWPionCO140 | DPWPionCO160 | DPWPionCO180 | DPWPionCO200 | DPWPionCO250 | DPWPionCO300 | DPWPionCO400 | DPWPionCO500 | DPWPionCO600 | DPWPionCO750 | DPWPionCO1000 |  |
| Nominal capacity   | [L]       | 100          | 120          | 140          | 160          | 180          | 200          | 250          | 300          | 400          | 500          | 600          | 750          | 1000          |  |
| Real capacity  | [L]       | 112          | 127          | 141          | 175          | 200          | 241          | 299          | 355          | 572          | 617          | 592          | 796          | 1076          |  |
| Energy accumulated in the tank. Assumptions for the temperatures: domestic water 42°C; set in the tank 90°C; at the point of consumption 8°C | [L]       | 205          | 232          | 258          | 320          | 365          | 439          | 546          | 647          | 1043         | 1125         | 1079         | 1451         | 1962          |  |
| Efficiency of shell 1  | [L/h]     | 177          | 250          | 330          | 406          | 456          | 507          | 583          | 648          | 863          | 1078         | 1095         | 1245         | 1494          |  |
| Efficiency of shell 2  | [L/h]     | 177          | 250          | 330          | 406          | 456          | 507          | 583          | 648          | 863          | 1078         | 1095         | 1245         | 1494          |  |
| Power of shell 1   | [kW]      | 9.7          | 12.0         | 15.5         | 16.5         | 17.5         | 18.5         | 22.1         | 25.6         | 31.0         | 40.0         | 40.5         | 49.0         | 67.5          |  |
| Power of shell 2   | [kW]      | 9.7          | 12.0         | 15.5         | 16.5         | 17.5         | 18.5         | 22.1         | 25.6         | 31.0         | 40.0         | 40.5         | 49.0         | 67.5          |  |
| Hot water demand   | [m³/h]    | 0.70         | 0.80         | 0.80         | 0.90         | 1.0          | 1.05         | 1.20         | 1.35         | 1.80         | 2.05         | 2.05         | 2.45         | 3.10          |  |
| Heating fluid demand   | [m³/h]    | 0.70         | 0.80         | 0.80         | 0.90         | 1.0          | 1.05         | 1.20         | 1.35         | 1.80         | 2.05         | 2.05         | 2.45         | 3.10          |  |
| Heating surface 1  | [m²]      | 0.47         | 0.55         | 0.66         | 0.78         | 0.92         | 0.85         | 1.07         | 1.27         | 2.20         | 1.32         | 1.65         | 1.80         | 1.70          |  |
| Heating surface 2  | [m²]      | 0.47         | 0.55         | 0.66         | 0.78         | 0.92         | 0.85         | 1.07         | 1.27         | 2.20         | 1.32         | 1.65         | 1.80         | 1.70          |  |
| Weight   | [kg]      | 32           | 37           | 42           | 54           | 63           | 57           | 72           | 87           | 81           | 88           | 111          | 123          | 96            |  |
| Water tank maximum working temperature and pressure  | [°C/Bar]  | 70°C / 6Bar  |              |              |              |              |              |              |              |              |              |              |              |               |  |
| Downtime loss (S) in watt [W] for storage capacity in liters [L]   | [W]       | 26           | 27           | 28           | 30           | 32           | 34           | 36           | 39           | 46           | 47           | 46           | 51           | 57            |  |
| Heat losses depending on the capacity (V)  | [kWh/24h] | 0.63         | 0.66         | 0.68         | 0.73         | 0.76         | 0.81         | 0.87         | 0.93         | 1.09         | 1.12         | 1.11         | 1.23         | 1.37          |  |
| DIAMENSIONS  |           |              |              |              |              |              |              |              |              |              |              |              |              |               |  |
| DIAMETER [L]   | [mm]      | 490          | 490          | 490          | 490          | 490          | 630          | 630          | 630          | 830          | 830          | 680          | 830          | 1000          |  |
| LENGHT [H]   | [mm]      | 1060         | 1180         | 1295         | 1560         | 1760         | 1240         | 1490         | 1740         | 1420         | 1520         | 1920         | 1920         | 1590          |  |
| DIAMENSION [A]   | [mm]      | 580          | 660          | 680          | 820          | 930          | 700          | 830          | 980          | 760          | 850          | 1080         | 1060         | 920           |  |
| DIAMENSION [B]   | [mm]      | 220          | 220          | 210          | 220          | 250          | 220          | 220          | 260          | 290          | 310          | 360          | 310          | 450           |  |
| DIAMENSION [C]   | [mm]      | 450          | 510          | 550          | 700          | 800          | 600          | 700          | 770          | 660          | 700          | 930          | 900          | 780           |  |
| DIAMENSION [D]   | [mm]      | 810          | 940          | 1020         | 1300         | 1500         | 1050         | 1300         | 1500         | 1120         | 1240         | 1650         | 1640         | 1250          |  |
| DIAMENSION [E]   | [mm]      | 200          | 200          | 200          | 200          | 200          | 170          | 170          | 170          | 270          | 270          | 200          | 270          | 370           |  |

SYMBOL: DPWPionCO



**A+**

100 | 120 | 140 | 160 | 180

**A**

200 | 250 | 300

**B**

400 | 500 | 600 | 750 | 1000