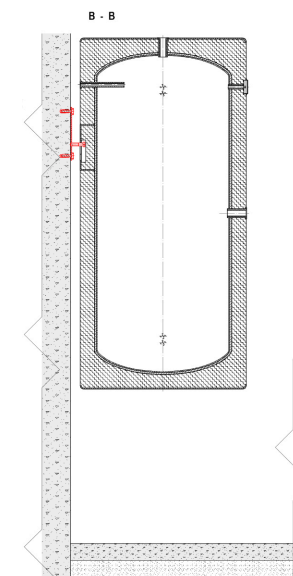
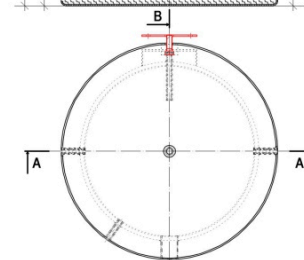
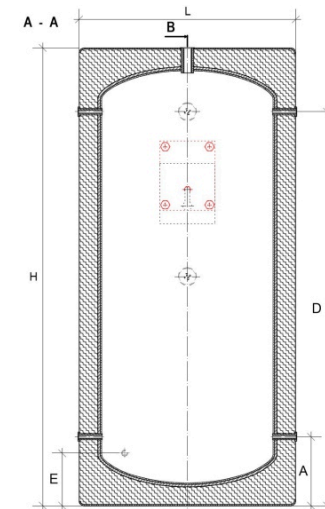




LEGEND

- 1 POLYURETHANE FOAM
THERMAL INSULATION
- 2 ANTI CORROSION LAYER
- 3 CAPILLARY TUBE
TEMPERATURE SENSOR 1/2"
- 4 DRAIN 3/4"
- 5 THERMOMETER 1/2"
- 6 CONNECTOR NO 1 5/4" OR 6/4"
- 7 CONNECTOR NO 2 5/4" OR 6/4"
- 8 VENTING 5/4"
- 9 ELECTRIC HEATER WITH THERMOSTAT 5/4"



TECHNICAL PARAMETERS		Symbol	Bu for PionWisz 80	Bu for PionWisz 100	Bu for PionWisz 120	Bu for PionWisz 140
Nominal capacity	[L]		80	100	120	140
Real capacity	[L]		98	112	127	141
Energy acumulated in the tank. Assumptions for the temperatures: domestic water 42°C; set in the tank 90°C; at the point of consumption 8°C	[L]		179	205	232	258
Heating surface	[m ²]		1,5	1,6	1,8	1,9
Weight	[kg]		33	37	41	45
Water tank maximum working temperature and pressure	[°C/Bar]		90°C / 6Bar			
Downtime loss (S) in watt [W] for storage capacity in liters [L]	[W]		25	26	27	28
Heat losses depending on the capacity (V)	[kWh/24h]		0,61	0,63	0,66	0,68
DIAMENSIONS						
DIAMETER [H]	[mm]		490	490	490	490
LENGHT [L]	[mm]		945	1060	1180	1295
DIAMENSION [A]	[mm]		250	280	280	280
DIAMENSION [D]	[mm]		685	830	950	1065
DIAMENSION [E]	[mm]		175	200	200	200

